

**VESSEL OUTLINE SPECIFICATION**  
**Deck Cargo Ship/Self-Propelled Barges**  
**SHIP NAME: VIVA-19**

Ship's Name	VIVA-19	Nationality	PANAMA
Type of Ship	Deck Cargo Ship	Port of Registry	PANAMA
Length of All	155.8 m	Class Society	OMCS Class
Depth	9 m	Built Date	2022/11/14
Length of Load Waterline	153.68 m	Operational Sea Area	A1+A2+A3
Loaded Draft	5.88 m	Breadth Moulded	40 m
Full Load Displacement	32153.6 t	Length Between Perpendiculars	149.88 m
Gross Tonnage	15514	Light Ship Draft	5.405 m
NET Tonnage	7426	Light Displacement	9177.13 t
Deck Loaded Areas	5440 m <sup>2</sup>	Service Speed	10.5 Knots
Hull Material	Steel	Cargo Capacity	21920 t
Deck Strength	20 t/m <sup>2</sup>	MDO Tanks	1803.374 m <sup>3</sup>
Generator	2×500Kw 1×90Kw 1×150Kw	Water Ballast Tanks	28578.560 m <sup>3</sup>
Emergency Generator	1×90Kw	Fresh Water Tanks	395.054 m <sup>3</sup>
Emergency Fire Pump	1×100 m <sup>3</sup> /h	Ballast Pump	4×1500t/h
Main Fire Pump	2×120 m <sup>3</sup> /h	Main Engine	2× 2980 Kw
Propelling System	FPP	Fuel Type	Diesel
Propeller	2×φ4400mm	Consumption	ABT. 13 t/24h
Windlass	4×75 Kw	Life Boat	2×25 people
Anchor (Speke anchor)	2×2280 Kg 1×8834 Kg (S) 1×8884 Kg (P)	Life Raft	2×20 people 1×10 people

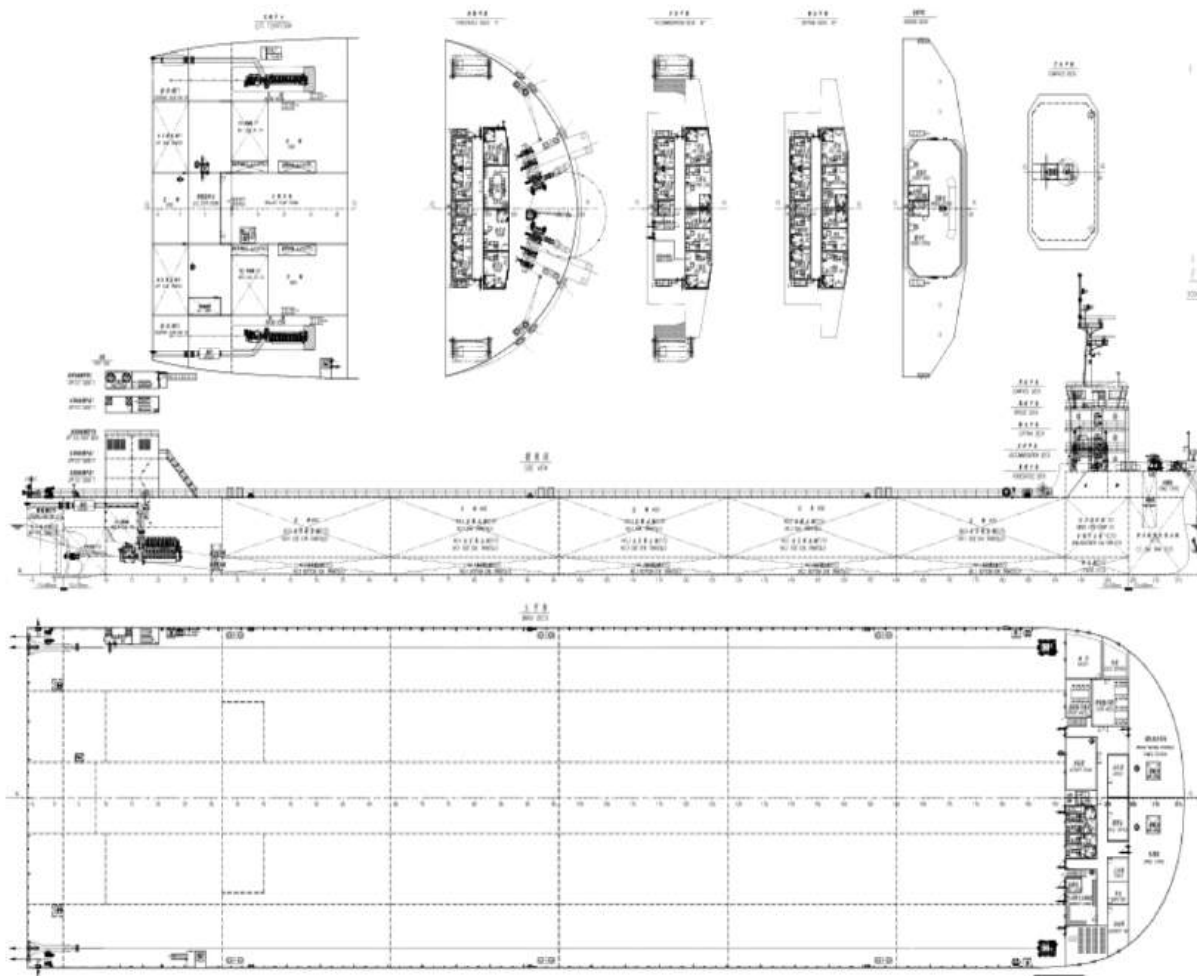
**VESSEL OUTLINE SPECIFICATION**  
**Deck Cargo Ship/Self-Propelled Barges**  
**SHIP NAME: VIVA-19**

Standard Magnetic Compass	FITTED	Anchor Chain	1×330×φ73mm(S) 1×302×φ73mm(P) 2×330×φ52mm(Stern)
Spare Magnetic Compass	FITTED	Gyro compass	FITTED
Heading or track control system	FITTED	Gyro-compass heading Repeater	FITTED
Pelorus or compass bearing device	FITTED	Gyro compass bearing repeater	FITTED
Electronic chart display and information system (ECDIS)	FITTED	Means of correcting bearing and heading	FITTED
Nautical publications	PROVIDED	Back up arrangements for ECDIS	ECDIS
9 GHz Radar	FITTED	Receiver for a global navigation satellite system	FITTED
Automatic radar plotting aid (ARPA)	FITTED	Second radar (3GHz)	FITTED
Automatic identification system (AIS)	FITTED	Automatic tracking aid	FITTED
Voyage data recorder (VDR)	FITTED	Long-range Identification and Tracking System	FITTED
Echo sounding device	FITTED	Speed and distance measuring device (through the water)	FITTED
Telephone to emergency steering position	FITTED	Rudder, propeller, thrust, pitch and operational mode	FITTED

**VESSEL OUTLINE SPECIFICATION**  
**Deck Cargo Ship/Self-Propelled Barges**  
**SHIP NAME: VIVA-19**

		indicator	
<b>International Code of Signals</b>	PROVIDED	<b>Daylight signaling lamp</b>	FITTED
<b>Bridge Navigation Warning Alarm System</b>	FITTED	<b>IAMSAR Manual, Volume III</b>	PROVIDED
<b>Gyro compass</b>	1×Standard 22	<b>Reflective Magnetic Compass</b>	1×CGF-165W
<b>Gyro compass bearing repeater</b>	2×SY-II-03	<b>GPS</b>	1×GN150
<b>Nautical charts</b>	1×HM-5817	<b>Radar</b>	1×FAR-2318 1×FAR-2338S
<b>TWO-WAY VHF</b>	3×HX-1500	<b>Echo-sounding device</b>	1×DS1068-1
<b>EPIRB</b>	1×NEB-1000	<b>MF/HF</b>	1×SRG-3150DN
<b>SART</b>	2×FT-501	<b>VHF</b>	2×GM600
		<b>NAVTEX Receiver</b>	1×HX2600

**VESSEL GENERAL ARRANGEMENT**  
**Deck Cargo Ship/Self-Propelled Barges**  
**SHIP NAME: VIVA-19**



**VESSEL GENERAL ARRANGEMENT**  
 Deck Cargo Ship/Self-Propelled Barges  
 SHIP NAME: VIVA-19

